



RO-LINX® THERMAL

Power Distribution Systems

RO-LINX® Thermal is Rogers' most innovative laminated busbar solution resulting from intensive research and testing on materials and process capabilities. This solution responds to an increasing demand for higher power levels in power converters. More power density is reflected in a need for higher working temperatures while copper thickness should remain stable. While current laminated busbars (RO-LINX Easy and Performance) are limited to a working temperature of 105°C, RO-LINX Thermal allows increased working temperatures up to 125°C. This results in a unique advantage by upgrading the current system design to a higher power level.

RO-LINX Thermal meets the highest humidity conditions. The extended conditions are 85°C/95RH, while the standard conditions are 55°C/95RH. Upon the requirements of the program, the customer can choose the appropriate humidity conditions for the RO-LINX Thermal.

* Rogers developed a proprietary Nickel formulation "Tex Nickel" specifically for higher temperature environments, enhancing/assuring smooth process capabilities while guaranteeing both visual and functional quality.

TECHNICAL CHARACTERISTICS

RO-LINX Thermal Standard Humidity	
Voltage (AC/DC) [kV]	20,0
Power	up to several MWs
Temperature range	-40°C / + 125°C
Relative humidity	55°C / 95RH
Conductor material	Copper, Aluminium, etc.
Insulation material	Polyester dielectric film, polyester, etc.
Production test	Partial discharge, high voltage, dimensional, etc.

ADVANTAGES

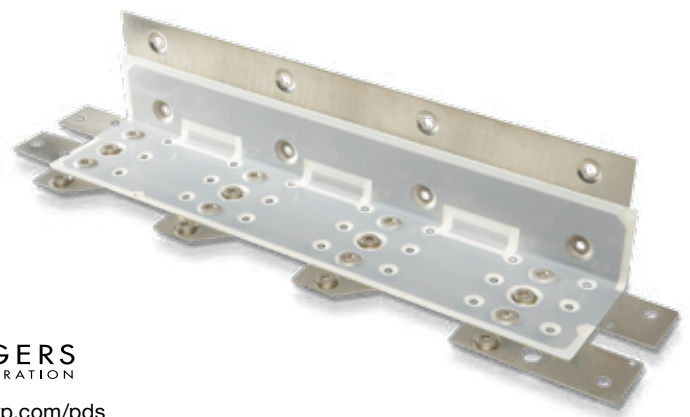
- ▶ Developed to get more power from the existing system and design
- ▶ Extended thermal characteristics: up to 125°C
- ▶ Extended humidity rating
- ▶ Designed to last

TYPICAL MARKET SEGMENTS

- ▶ Traction (railway, ship propulsion, mining vehicles and other heavy equipment)
- ▶ Industrial converters
- ▶ Clean energy
- ▶ Electricity production

TECHNICAL CHARACTERISTICS

RO-LINX Thermal High Humidity	
Voltage (AC/DC) [kV]	20,0
Power	up to several MWs
Temperature range	-40°C / + 125°C
Relative humidity	85°C / 95RH
Conductor material	Copper, Aluminium, etc.
Insulation material	Polyester dielectric film, polyester, etc.
Production test	Partial discharge, high voltage, dimensional, etc.



www.rogerscorp.com/pds

Rogers BVBA, Power Distribution Systems Division, Gent, Belgium, Tel. +32 9 235 36 11, Fax +32 9 235 36 58

The information contained in this brochure is intended to assist you in designing with Rogers' RO-LINX Busbars. It is not intended to and does not create any warranties, express or implied, including any warranty of merchantability or fitness for a particular purpose or that the results shown in the brochure will be achieved by a user for a particular purpose. The user is responsible for determining the suitability of Rogers' RO-LINX Busbars for each application. The Rogers logo, The world runs better with Rogers. and RO-LINX are licensed trademarks of Rogers Corporation. © 2011 Rogers Corporation. All rights reserved. Publication # 57-003