



UL rating for RO-LINX® BUSBARS

It's essential...
to go beyond flammability

In the industry of laminated busbars, the UL-ratings for busbars are often limited to the UL-94 flammability rating classes. However, often the customers' end products require complying with the UL508C standard (Power Conversion Equipment). Since a busbar is not considered an end product but a component of a complete converter, it can not be directly listed to UL508C. When, however, fulfilling the requirements in the UL746C test standard, it complies to specific requirements applicable for busbars used in Power Conversion Equipment.

Rogers, in close co-operation with UL, has been able to **define a new and complete UL-file** by creating a modular and intelligent busbar construction.

This busbar construction has been tested against UL746C and enables Rogers to use the UL-marking for almost any busbar design -varying in thickness, conductor layers, insulations, etc...- in a faster and easier way to get your end product UL508C listed. The Rogers engineering team can help design the right busbar construction **that meets this new UL-rating**.

This allows you to get your busbar design **UL-approved**, reduce proper validation time and expenses and bring your end product faster to the market. With this new UL-listing Rogers can deliver most of the designed RO-LINX® busbars with the UL-mark.


This new UL-file for RO-LINX busbars shows all required ratings for busbars according to UL746C. It consists of:

- ▶ Flammability rating (UL94)
- ▶ Hot-Wire resistance to Ignition (HWI)
- ▶ High Current Arc resistance to Ignition (HAI)
- ▶ Comparative Tracking Index (CTI)
- ▶ Relative Thermal Index (RTI)

ADVANTAGES

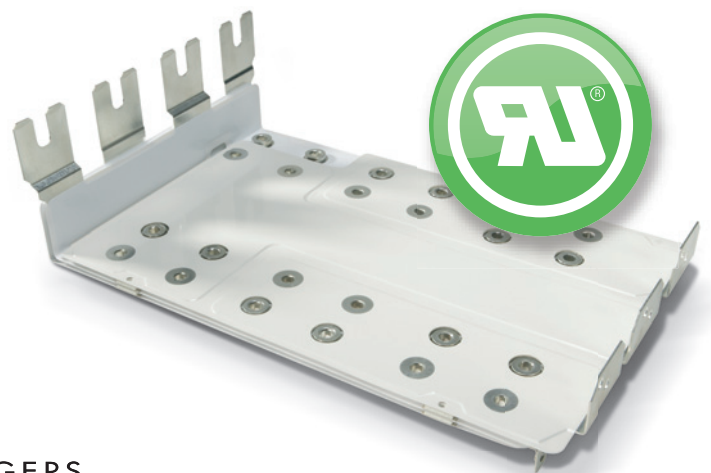
A RO-LINX busbar tested according to UL746C offers:

- ▶ Easy UL-approval due to a new UL-file and intelligent and modular busbar construction
- ▶ Reduction of the validation time and internal preparation cost for your complete 'end product'
- ▶ Shorter time-to-market for your product
- ▶ A guarantee for product quality
- ▶ Reduction of engineering time, including less prototype iterations: right the first time
- ▶ Avoidance of over-design

Upon customers' request, RO-LINX busbars can be marked as a 'recognized component'. This  marking is a UL-marking for components and is under strict supervision of UL.

(Note UL: The Component Recognition marking is found on a wide range of products, including some switches, power supplies, printed wiring boards, some industrial control equipment and thousands of other products.)

Finally, this marking will allow you to get your end-product UL-listed faster.



www.rogerscorp.com/pds

Rogers bvba, Power Distribution Systems Division, Gent, Belgium, Tel. +32.9.235.3611, Fax. +32.9.235.3658

The information contained in this product sheet is intended to assist you in designing with Rogers' RO-LINX Busbars. It is not intended to and does not create any warranties, express or implied, including any warranty of merchantability or fitness for a particular purpose or that the results shown on the product sheet will be achieved by a user for a particular purpose. The user is responsible for determining the suitability of Rogers' RO-LINX Busbars for each application. The Rogers logo, The world runs better with Rogers, and RO-LINX are licensed trademarks of Rogers Corporation. © 2008 Rogers Corporation. All rights reserved. Publication # 57-003

DEFINITIONS

▶ **UL508C: for Power Conversion Equipment**

These requirements cover devices rated 1500 Volt or less.

▶ **UL746C: Polymeric Materials - Use in Electrical Equipment Evaluations**

These requirements cover parts made of polymeric materials that are used in electrical equipment and describe the various test procedures and their use in the testing of such parts and equipment.

▶ **UL-94: The Standard for Flammability of Plastic Materials for Parts in Devices and Appliances**

UL-94 defines a test program conducted on plastic materials to measure flammability characteristics. It determines the material's tendency either to extinguish or to spread the flame once the specimen has been ignited.

▶ **HWI: Hot-Wire resistance to Ignition**

Hot-Wire Ignition performance is expressed as the mean number of seconds needed to either ignite standard specimens or to burn through the specimens without ignition. The specimens are wrapped with resistance wire that dissipates a specified level of electrical energy

▶ **HAI: High Current Arc resistance to Ignition**

High-Current Arc Ignition Performance is expressed as the number of arc rupture exposures (standardized as to electrode type and shape and electric circuit) that are necessary to ignite a material when they are applied at a standard rate on the surface of the material.

▶ **CTI: Comparative Tracking Index**

Comparative Tracking Index is expressed as that voltage which causes tracking after 50 drops of 0.1 percent ammonium chloride solution have fallen on the material. The results of testing the nominal 3 mm thickness are considered representative of the material's performance in any thickness.

▶ **RTI: Relative Thermal Index**

Maximum service temperature for a material, where a class of critical property will not be unacceptably compromised through chemical thermal degradation, over the reasonable life of an electrical product, relative to a reference material having a confirmed, acceptable corresponding performance defined RTI.

Mil Dsg	Color	Min Thk (mm)	Flame Class	HWI	HAI	Elec	RTI		HVTR	D495	CTI
							Mech				
							Imp	Str			
Insulated busbar, single- and multi-layer, furnished in various configurations											
YE-(a)-(b)	WT	1.0	V-0	0	0	105	–	105	–	–	–
		3.0	V-0	0	0	105	–	105	–	–	0
WH-(a)-(b)	WT	1.0	V-1	0	3	105	–	105	–	–	–
		3.0	V-0	0	3	105	–	105	–	–	0
		9.0	V-0	0	2	105	–	105	–	–	–
CO-(a)-(b)	WT	1.0	V-1	0	3	105	–	105	–	–	–
		3.0	V-0	0	3	105	–	105	–	–	0
		9.0	V-0	0	2	105	–	105	–	–	–

*Suffix to grade designation optional.

(a) - "YEI" or "WHI" or "CI" or "X."

(b) - "DM" or "X."

Visit www.rogerscorp.com/pds to locate an easy link to Rogers UL-listing in the UL directories.



www.rogerscorp.com/pds

Rogers bvba, Power Distribution Systems Division, Gent, Belgium, Tel. +32.9.235.3611, Fax. +32.9.235.3658

The information contained in this product sheet is intended to assist you in designing with Rogers' RO-LINX Busbars. It is not intended to and does not create any warranties, express or implied, including any warranty of merchantability or fitness for a particular purpose or that the results shown on the product sheet will be achieved by a user for a particular purpose. The user is responsible for determining the suitability of Rogers' RO-LINX Busbars for each application. The Rogers logo, The world runs better with Rogers, and RO-LINX are licensed trademarks of Rogers Corporation. © 2008 Rogers Corporation. All rights reserved. Publication # 57-003